

Soliance - Actisculpt

Fight against cellulite

09/2015



Givaudan

engage your senses



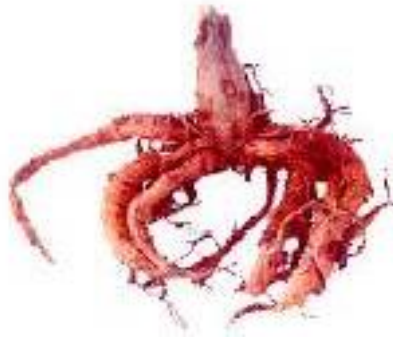
Composition

Actisculpt is a blend of two plant extracts known for their abilities to decrease fat levels.



Coleus Forskohlii Root extract

contains 0.1% of **forskolin** working to elicit cAMP dependent responses.



Commiphora Mukul Resin extract

is the gum resin from the mukul myrrh tree, a small, thorny tree found in Arabia and India.

used in Ayurveda herbal medicine, **as a treatment of obesity and lipid disorders.**

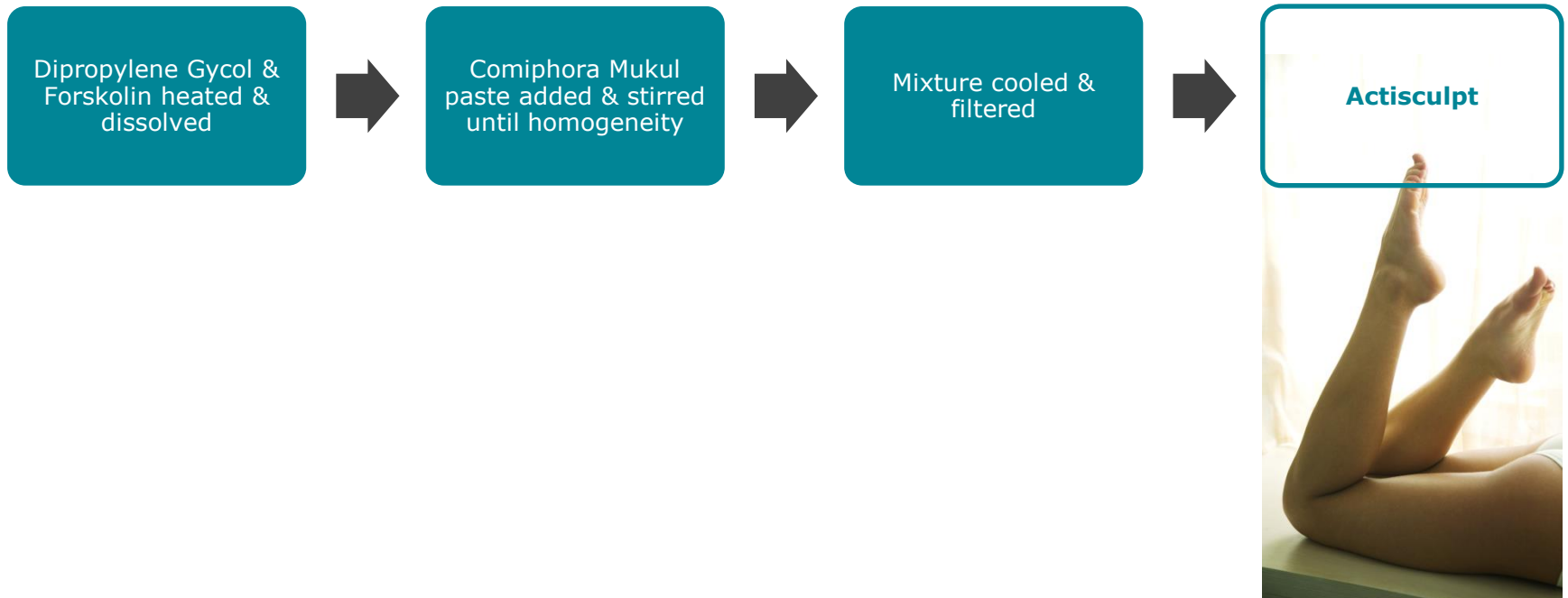
known to **lower serum triglycerides and cholesterol especially bad ones (LDL and VLDL).**

The active constituents of Commiphora Mukul are the **guggulsterones.**



release of triglycerides from the blood and prevent their redepositing in the skin adipocytes.

Production Process



Mecanism of action

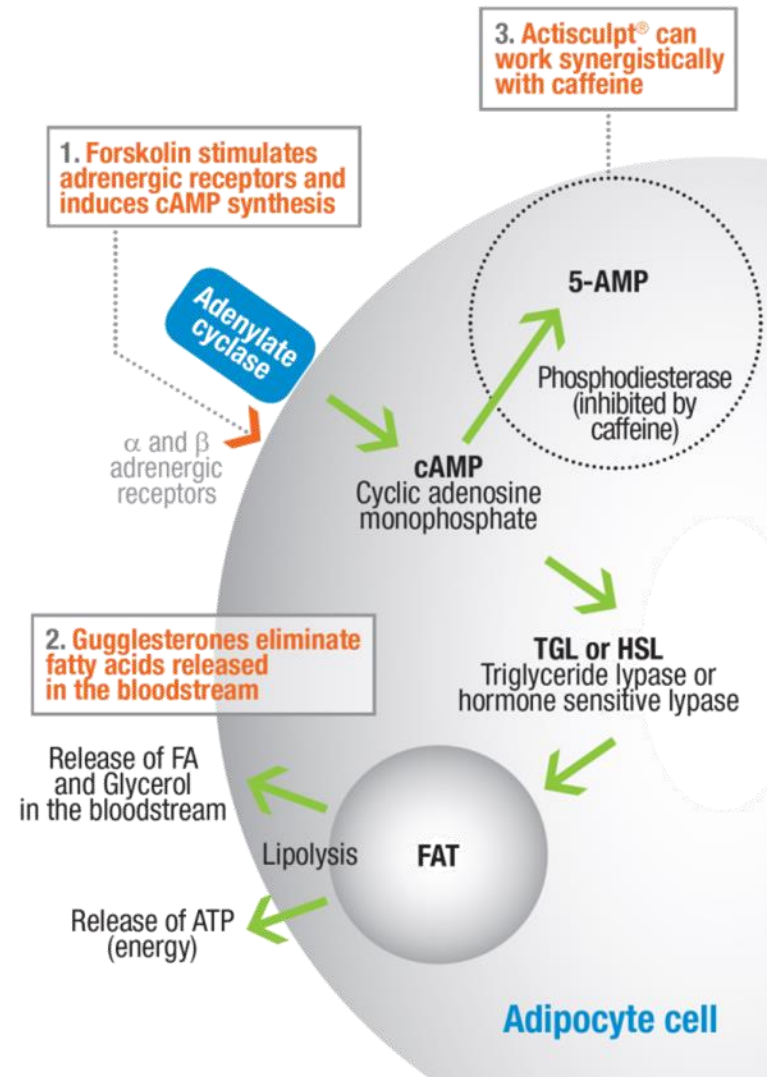
Forskolin and Gugglesterones

Forskolin

- Stimulates adrenergic receptors
- Induces cAMP synthesis
- Induces fat lipolysis

Gugglesterone

- Eliminates fatty acid and sterols released in the blood by lipolysis



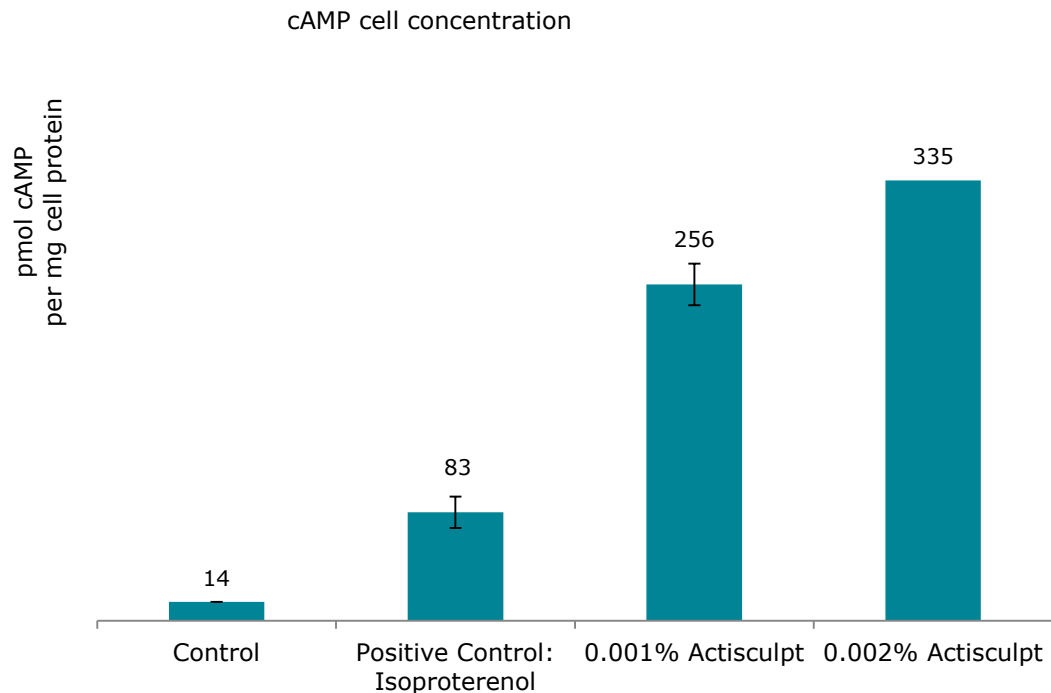
Effect on human adipocyte formation

In vitro test

Adipocytes were obtained from processed pre-adipocyte cells and treated with Actisculpt at 0.002% and 0.001%.

- The positive control consists of differentiated cells treated with isoproterenol, a cAMP booster.
- The negative control are pre-adipocytes not capable of lipolysis.

Dose dependent increase of cAMP level in adipocytes is observed using Actisculpt.



Slimming and anti-fat nodes effect

In vivo test

A gel containing Actisculpt, or a placebo cream is applied twice-daily on 10 obese women during 56 days.

The volunteers agreed not to change their eating and exercise habits during the study period.

2 measurement are realized on:

- thigh perimeter,
- the fat nodes.



Slimming and anti-fat nodes effect

In vivo test

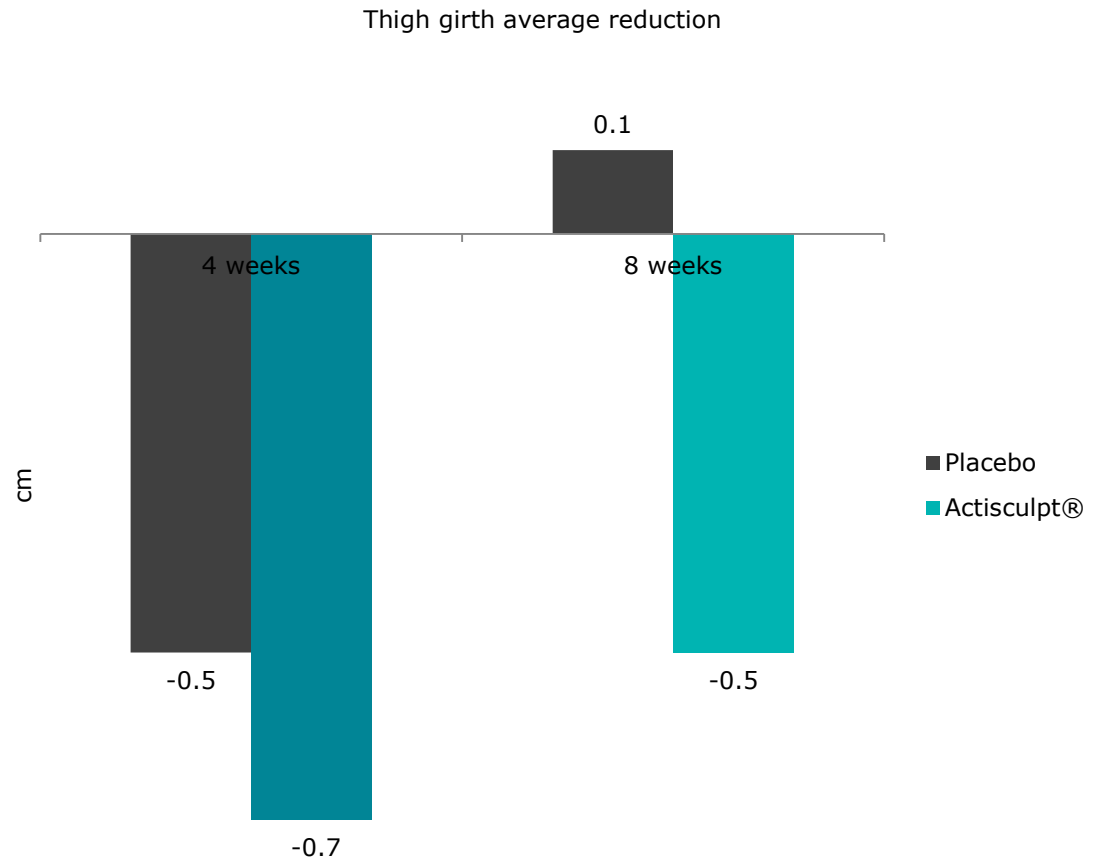
Thigh perimeter

Thigh measurement was carried out with a tape measure.

A mobile board was placed at a defined position, and the circumference of the thigh was marked using a ruler and pen.

After 4 & 8 weeks of treatment, the average perimeter of the thighs decreased.

After 8 week, this variation was observed on 80% of the volunteers.



Slimming and anti-fat nodes effect

In vivo test

Fat nodes

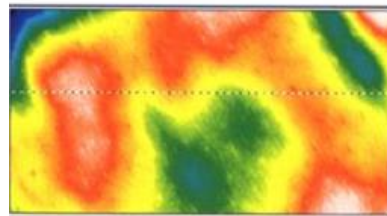
Silicone polymer skin prints were taken on the thigh zones before the start of the study (day zero) and at day 56.

The determination of the geometric parameters of the fat nodes is carried out using Laser Profilometry.

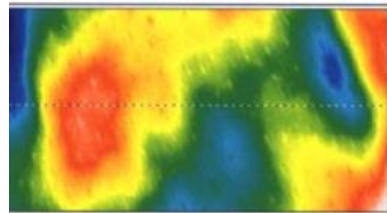
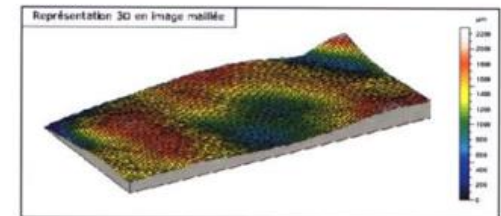
We clearly reduced the amount of fat storage with Actisculpt

Profilometry results

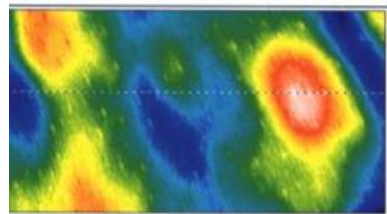
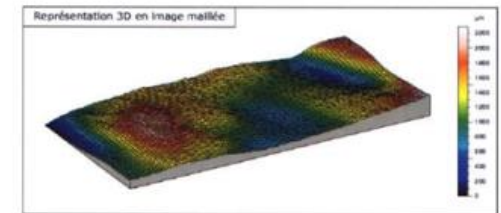
Up to 63% of surface irregularities reduction (1 volunteer)



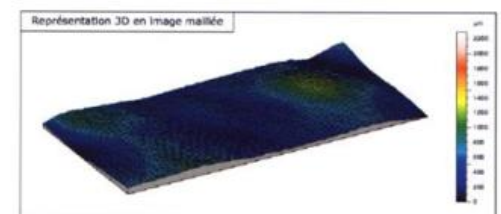
Day 0



Week 4



Week 8



Givaudan

Confidential and proprietary business information of Givaudan

3

Cosmetic uses

Characteristics



INCI: Dipropylene Glycol,
Commiphora Mukul Resin Extract,
Coleus Forskohlii Root Extract.

Use level: 0.2 to 1%

Preservative: None

Applications:

Anti-cellulite products, as an effective lipolytic active

Body firming & shaping products

Facial sculpting, helping to enhance cheekbones, sculpt the jaw line

Men fit, Abdomen sculpting, 'Love handles' on hips, Facial cheekbone sculpting



Actisculpt is an unique blend of plants known from Indian Ayurvedic medicine which helps to re-shape your body.

With Actisculpt feels better in your skin!

Thank you

Soliance - Actisculpt
Herbal firming

The data in this document ("Data"): (i) has been prepared by Soliance in accordance with Soliance's internal protocols and procedures; (ii) is provided to Customer for its information and internal use only; (iii) is provided without warranty of any kind, including, without limitation, any implied warranty of accuracy, merchantability, fitness for particular purpose or non-infringement of third party intellectual property rights. In no event shall Soliance be liable to Customer or any third party for any losses, indemnities or damages of any kind (including, without limitation, any and all direct, special, indirect, incidental, or consequential damages or lost profits or revenues) that may arise out of, or in connection with, the use of the Data by Customer.

Customer is solely responsible for assessing the accuracy and reliability of the Data for its own purposes (including, without limitation, Customer's end-use applications), and assumes all risks and liabilities arising out of or in connection with the use of the Data.

Givaudan