



**REGULATORY:** TSCA, DSL, REACH, EINECS, AICS, IECSC, ENCS, ECL, NZIoC, PICCS, ASIA-PAC

**INCI NAME** Lauramidopropyl Betaine  
**CAS No.** 4292-10-8  
**EINECS No.** 224-292-6

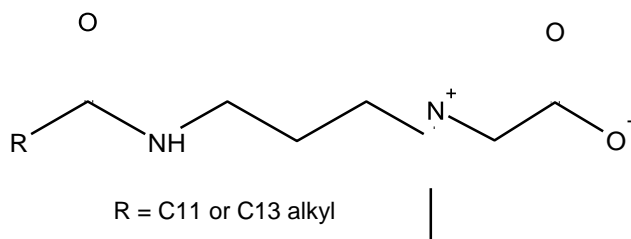
### DESCRIPTION

**CP-LAPB** is a high foaming amphoteric surfactant that displays higher foaming and viscosity building properties versus traditional cocamidopropyl betaines in shampoos, skin cleansers, and other mild personal care products. CP-LAPB is stable over a wide pH range and is compatible with anionic, nonionic and cationic surfactants. CP-LAPB foams well, even in high electrolyte solutions. In cosmetic formulations, CP-LAPB shows a marked increase in viscosity along with increased flash foam when formulated with anionic surfactants. It is also valuable in bubble bath formulations where mildness, lime soap dispersing properties, and viscosity building characteristics are necessary.

### SPECIFICATIONS

Appearance	Clear liquid
pH (10% Solution)	7 – 9
Odor	Typical
Color, Gardner '98	3 Max
Specific Gravity (25°C)	1.04
% Activity	30
Draves wetting, 1% active solutions	5.12 sec

### STRUCTURE



### PRINCIPAL USES

Shampoos	4% – 8%
Liquid Soaps	4% – 8%
Bubble Baths	6% – 10%
Body Cleansers	10% – 15%
Lime Soap Dispersion	5% – 15%

### STORAGE AND HANDLING

CP-LAPB should be stored in closed containers. Frozen material may be thawed in a warm room, venting drums while warming. A Safety Data Sheet is available upon request.

### PACKAGING

Available in 450 lb. (204 kg.) poly drums and 2300 lb. (1043 kg.) totes.