

Active Beauty
Eau de Source Marine (Spring Sea Water)
Unique moisturizing water



Givaudan

engage your senses



Eau de Source Marine (Spring Sea Water)

Unique moisturizing water



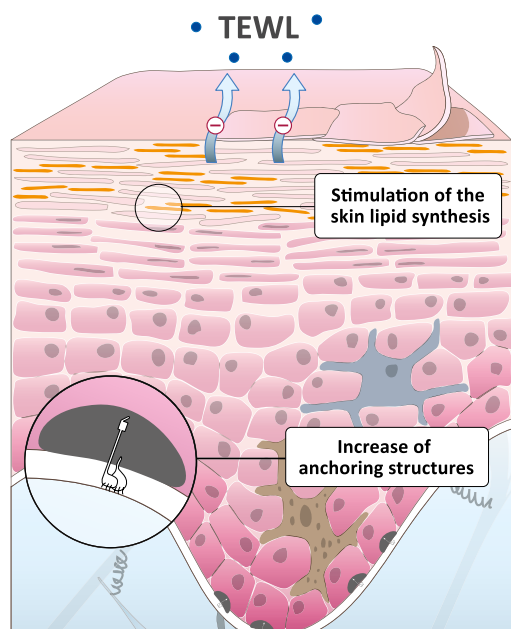
Eau de Source Marine is an active water which comes from Soliance Marine Biotechnology Center, located in Brittany (France). This specific water is naturally rich in minerals and trace elements because of its contact with the sand and the granites of its original environment. More than just water, Eau de Source Marine is a moisturizer and a source of vitality.

Mechanism of action

Eau de Source Marine has a moisturizing activity thanks to two mechanisms:

It stimulates skin lipid synthesis to reinforce skin barrier function and prevent TransEpidermal Water Loss (TEWL).

It reinforces Dermo-Epidermal Junction (DEJ) and optimizes cohesion between the dermis and the epidermis by increasing the number of hemidesmosome synthesis.



A unique composition

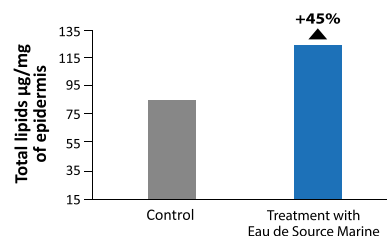
	Eau de Source Marine	Sea water	
Trace elements (µg/L)	Copper	< 0.05	0.26
	Manganese	3.34	0.27
	Zinc	8.5	0.98
	Silicium	3300	232
Mineral salts (mg/L)	Calcium	385	413
	Magnesium	1190	1369
	Potassium	14	437
	Sodium	630	10700

Eau de Source Marine contains a much higher level of manganese and silicium than sea water.

Stimulation of skin lipid synthesis (In vitro test)

Human keratinocytes were treated during 12 days with Eau de Source Marine (100µg/mL).

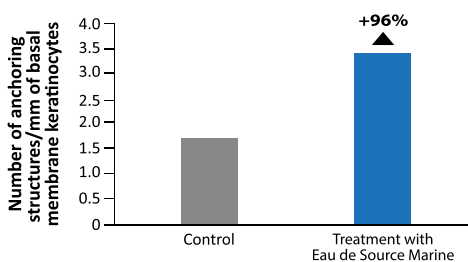
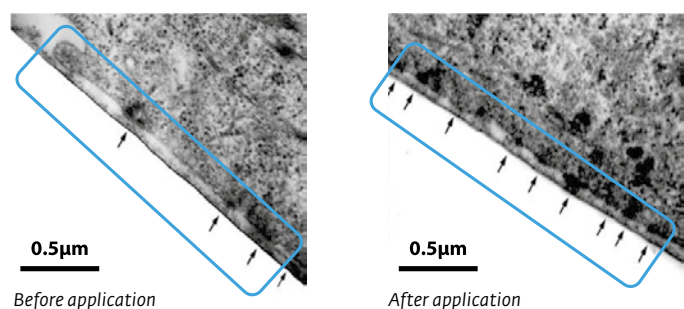
3 major lipids of the stratum corneum were analyzed by chromatographic analysis.



By reinforcing skin lipid barrier, Eau de Source Marine prevents TEWL and helps to maintain skin hydration.

DEJ reinforcement (In vitro test)

Basal keratinocytes were treated during 10 days with Eau de Source Marine (1mg/mL). Observations and quantification were made with electron microscopy with an enlargement of 30 000.



By increasing the number of hemidesmosomes, Eau de Source Marine reinforces the DEJ.

INCI name: Sea water. | **Preservative:** Phenoxyethanol and Chlorphenesin.

Other cosmetic references: Eau de Source Marine SC | **INCI name:** Sea water | **Preservative:** Phenoxyethanol
Eau de Source Marine 80%[®] | **INCI name:** Sea water (and) Propanediol | **Preservative:** None

Dosage: < 20% | **Form:** liquid | Hydrosoluble

Cosmetic applications: Moisturizing products, anti-aging creams, body care.